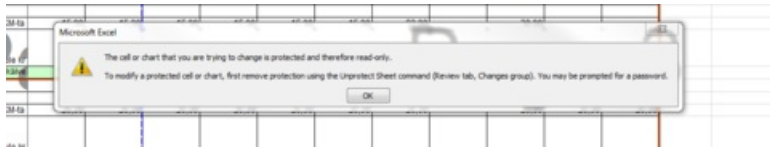


Lukustatud Exceli avamine

11 years tagasi Autor: [Marko Habicht](#)



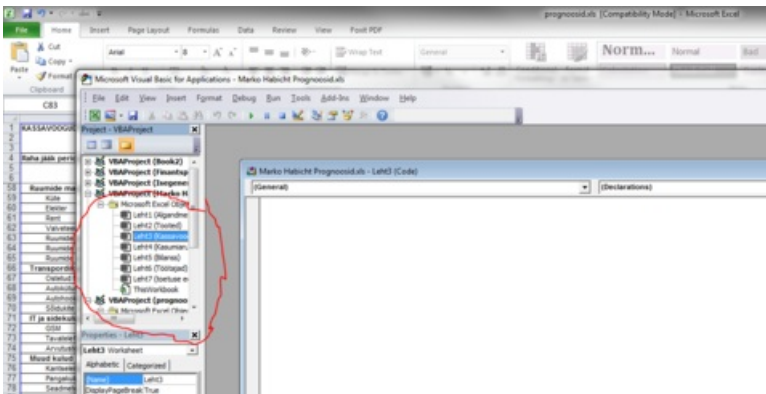
Peale mitmetunnist kaklemist valemitest kubiseva Exceli failiga, mis pidevalt lõhkus andmete kopeerimise peale oma valemideid, otsustain asja uurida. Probleem oli nimelt selles, et parooliga kaitstud failidel puudub ligipääs valemitele ning seega ei õnnestu neid parandada, veel vähem viga diagnoosida.

Selgub, et parooli eemaldamiseks pole vaja isegi alla laadida tasuta ega tasuta tarkvara, vaid piisab Exceli faili arendaja menüüs skripti sisestamisest.

Copy-Paste ja *Run*. Enam lihtsamaks on raske seda teha. Proovitud Office 2010 peal.

Samm-sammult juhend on siin:

- Ava lukustatud Exceli fail.
- Vajuta **Alt+F11** või vajuta *View Code* Developers Tabi alt, mille peale avaneb VBA sisestamise aken.



- Vali vasakult mõni lukus olev tööleht: "*sheet*"
- Selle peale avaneb valge tekstisisestamise aken, kuhu Sisesta järgnev kood:

```
Sub PasswordBreaker()
```

```
    'Breaks worksheet password protection.
```

```
    Dim i As Integer, j As Integer, k As Integer
```

```
    Dim l As Integer, m As Integer, n As Integer
```

```
    Dim i1 As Integer, i2 As Integer, i3 As Integer
```

```
    Dim i4 As Integer, i5 As Integer, i6 As Integer
```

```
    On Error Resume Next
```

```
    For i = 65 To 66: For j = 65 To 66: For k = 65 To 66
```

```
    For l = 65 To 66: For m = 65 To 66: For i1 = 65 To 66
```

```
    For i2 = 65 To 66: For i3 = 65 To 66: For i4 = 65 To 66
```

```
    For i5 = 65 To 66: For i6 = 65 To 66: For n = 32 To 126
```

```
    ActiveSheet.Unprotect Chr(i) & Chr(j) & Chr(k) & _
```

```
        Chr(l) & Chr(m) & Chr(i1) & Chr(i2) & Chr(i3) & _
```

```
        Chr(i4) & Chr(i5) & Chr(i6) & Chr(n)
```

```
    If ActiveSheet.ProtectContents = False Then
```

```
        MsgBox "One usable password is " & Chr(i) & Chr(j) & _
```

```
            Chr(k) & Chr(l) & Chr(m) & Chr(i1) & Chr(i2) & _
```

```
            Chr(i3) & Chr(i4) & Chr(i5) & Chr(i6) & Chr(n)
```

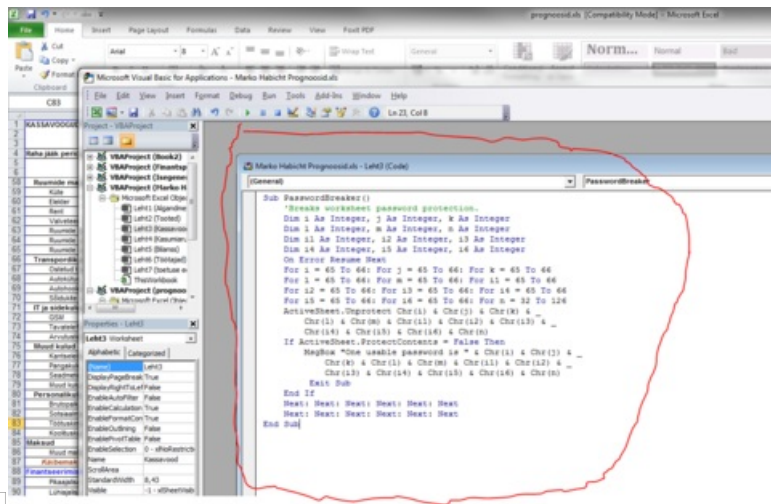
```
        Exit Sub
```

```
    End If
```

```
    Next: Next: Next: Next: Next: Next
```

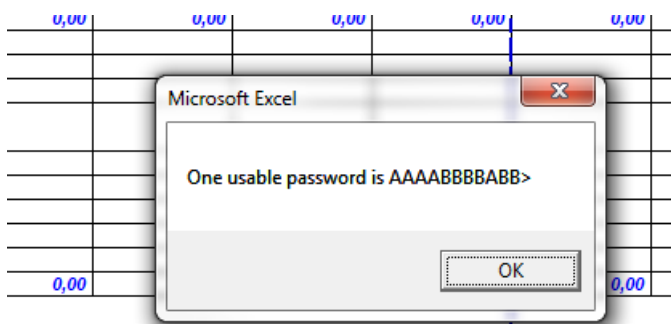
```
    Next: Next: Next: Next: Next: Next
```

```
End Sub
```



- Nüüd vajuta F5 või run ning ongi parool eemaldatud.

Täiendavalt kuvatakse veel *popup*ina kasutatav parool, kui peaks juhtuma, et kõik lehed ei ole siiski avatud.



Originaalõpetuse leiab Wisconsin ülikooli lehel: <http://uknowit.uwgb.edu/page.php?id=28850>.

- [Lahendused](#)
- [Turvalisus](#)
- [Tarkvara](#)
- [Lahendused](#)